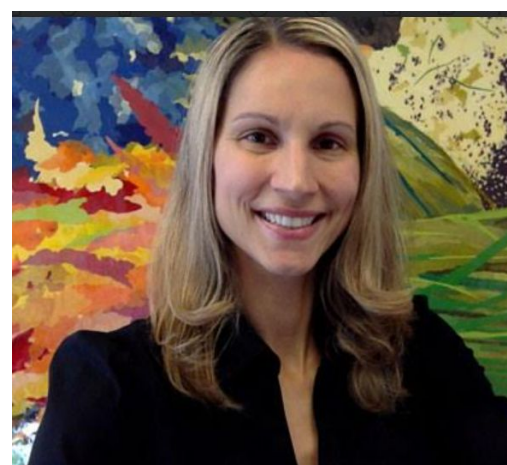




# BALMVILLE ELEMENTARY SCHOOL NEWS LETTER

December 2025

## PRINCIPAL'S UPDATE



Dear Balmville Families,

At school, we know that students grow not only academically but also as individuals. Social-emotional learning (SEL) helps children build the mindsets, skills, and confidence they need to succeed in school, in future careers, and in life. SEL includes important areas such as building positive relationships, staying motivated, managing emotions, and developing healthy habits for learning. Research shows that when students strengthen these skills, they often see improvements in academic achievement, attendance, and overall well-being.

To support every student, our district partners with **Panorama Education**, a tool used in thousands of schools nationwide. Panorama helps us gather meaningful insight into students' social-emotional strengths and areas for growth. Teachers provide feedback through SEL perception measures—these are **not grades or evaluations** but simple tools that help us understand how to best meet the needs of our learners.

As part of this process, students will also answer developmentally appropriate questions related to:

- **Grit:** Persevering through setbacks to reach long-term goals
- **Self-Management:** Managing emotions, thoughts, and behaviors in different situations
- **Social Awareness:** Understanding and empathizing with the perspectives of others
- **Self-Efficacy:** Believing in their ability to succeed academically
- **Learning Strategies:** Using strategies to support and guide their own learning
- **Classroom Effort:** Putting effort into schoolwork and learning
- **Social Perspective-Taking:** Considering the perspectives of teachers
- **Emotion Regulation:** Managing and responding to emotions in healthy ways
- **Engagement:** Staying attentive, interested, and invested in school

By combining teacher and student perspectives, we gain a fuller picture of each child's social-emotional development. This helps us encourage meaningful conversations, set supportive goals, and build a school environment where every student feels connected, capable, and cared for.

Together, we can continue nurturing the whole child—both hearts and minds.

With appreciation,

Dr. Karrie Rahaman-Bunce  
Principal

Ms. Amanda Greene  
Assistant Principal

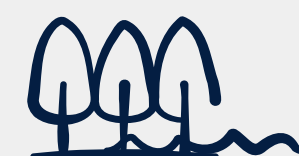
## GOLDIEBACK GLOWS



### PREK - 5 CHARACTER TRAIT ASSEMBLIES

12/5/25

Students will be recognized for the November Character trait of Integrity during multiple grade level assemblies



## STAFF PROFESSIONAL DEVELOPMENT HALF DAY FOR STUDENTS

12/23/25

STUDENT DISMISSAL BEGINS @  
11:45 AM

### THE INNOVATION STATION



### The Gingerbread Man

**TOP SECRET!! (STUDENTS TO NOT KNOW)**

As we get ready for winter break, our class will have a special guest visit us (gingerbread man). However, after just one day in our classroom, our gingerbread man will run away to explore the world! As part of this fun experiment, we ask for letters or postcards from different places around the world. We will track each location on our classroom world map to see all the places our class gingerbread man has visited!

If you can help us with this project, we would greatly appreciate it. Please ask your friends and family—near or far— to write to our class. Thank you for supporting our fun!

What to include in the letter or postcard:

- -Where the writer is from
- -That they saw our gingerbread man
- -Something he did or saw while he was there.
- **-END WITH:** "He ran away saying, "You can't catch me, I'm the gingerbread man!"

**Please send to:**  
Mrs. Garcia's Class  
Balmville Elementary School  
5144 Route 9W  
Newburgh, NY 12550  
OR  
[kgarciaomana@necsd.net](mailto:kgarciaomana@necsd.net)





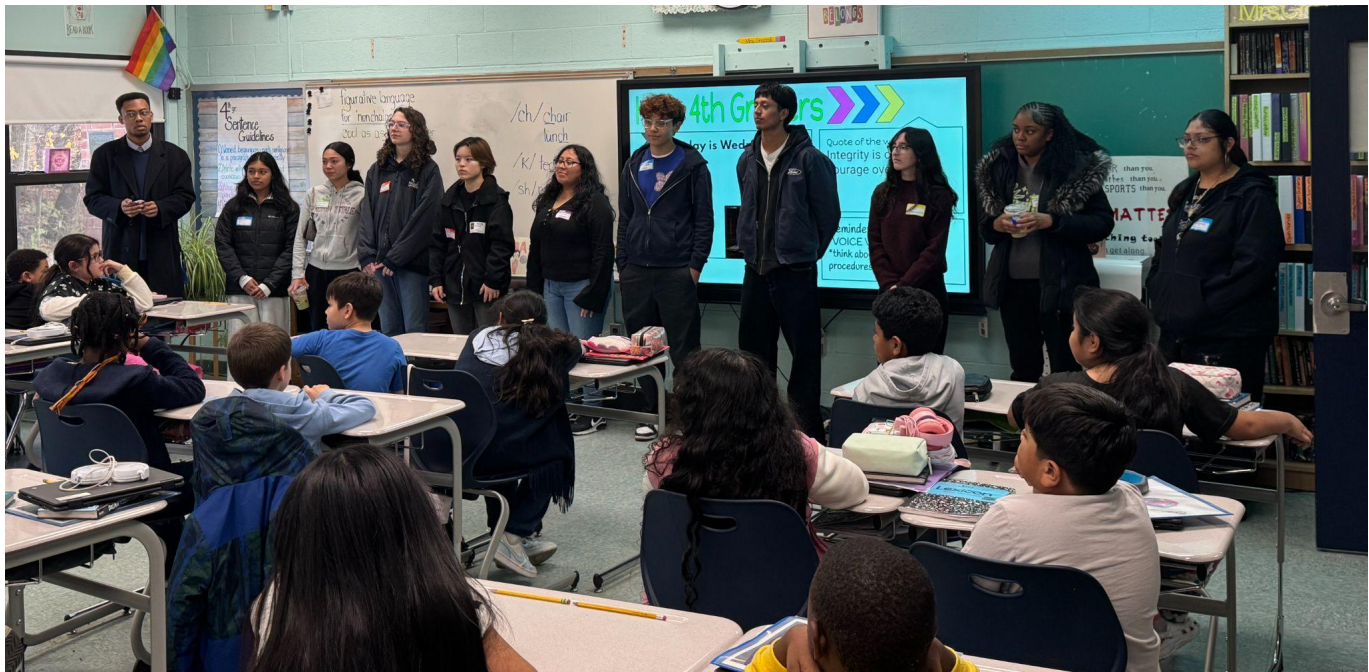
## Newburgh Free Academy Students Visit Balmville Elementary School

On Tuesday, November 18th, Mr. Henry—an NFA teacher and proud Balmville Elementary alum (Class of '09)—returned to visit Mrs. Crozzoli's 4th grade class for the school's first-ever **Reading Party**. He was joined by members of the English Honor Society, all eager to share their love of reading with younger students.

It was inspiring to see the high school students reading aloud and connecting so thoughtfully with the fourth graders. One participant, Roberto Coyopol Solis, shared that the experience brought him "joy and nostalgia," reminding him of his own elementary school days, when "the vocab quiz at the end of the week" felt like his biggest worry. He said he was moved by the fourth graders' enthusiasm and sincerity, noting that their energy made the visit especially meaningful. Roberto hopes the conversations they shared will stay with the students and motivate them as they continue to learn and grow.

Balmville students shared that they loved having the high schoolers visit and are already looking forward to taking a future trip to NFA to learn even more about literacy.

Moments like these highlight the power of literacy to connect learners of all ages and build a strong, supportive community of readers.



## PTA PEEK-A-VIEW



### MCDONALD'S FUNDRAISER

Join us for a McDonald's fundraiser! Come support the Balmville PTA on Wednesday, December 3rd from 4:00-7:00pm at McDonald's on North Plank Rd. A portion of all proceeds will go to supporting Balmville student experiences. We hope to see you there!

SHOP WITH US FOR  
**HOLIDAY GIFTS!**

### It's that time of year!

The Balmville Holiday store will be open December 8-12th. Envelopes will be sent home December 1<sup>st</sup>. Please fill them out and return them on your child's scheduled shopping day.

We are also looking for volunteers to help our little shoppers enjoy their experience. Please use the link below to sign up to volunteer!

Happy Holidays from the Balmville PTA